

*Shaping Inspiration*

ROSSKOPF  
+ PARTNER



---

**PARTNER FOR PRODUCTION**

---

## The stuff the future is made of

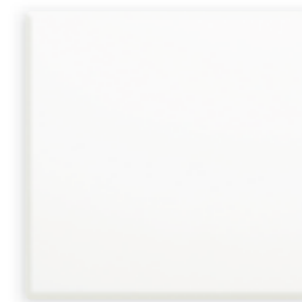
With the emergence of modern materials, the spectrum of possibilities has expanded impressively. Today, ideas can be realized both aesthetically and functionally that simply cannot be achieved using traditional materials — three-dimensional free-forms; homogeneous, gap-free surfaces; interesting illumination and lighting effects; care and user benefits and all of that in myriads of colours and texture variations from matte to high gloss.

It is no surprise, then, that builders and architects are very prone to ask for these materials, plan them and implement them in their projects. In addition to a great design, perfect workmanship and finishing are crucial to achieving an impressive result from the initial idea that provides lasting enjoyment to its users.

If you are looking for a business partner whose engineers, fabrication and installation experts can draw on decades of experience in the processing of this material, you've just found him. On the following pages, we will tell you why this is so and which unimaginable possibilities are available for you from our complete assortment of modern materials.

**Welcome to Rosskopf + Partner!**

### + Our Assortment of Materials



**Solid Surface Material**  
*Freely shaped, seamless, translucent*



**Quartz Material**  
*Tough, high gloss, super easy to care for*



**Porcelain Ceramic**  
*Even harder, semi-gloss, completely scratch-resistant*

### + New Possibilities

Creations like this bedroom made of solid surface material in the Spanish designer hotel "Puerta America" by the architect Zaha Hadid couldn't possibly be constructed without contemporary materials – nor would it be possible without our engineers and material processing experts.

120

# We are your extended work bench and think tank

We don't need to explain much about the importance of error-free processes and perfectly organized interfaces to a professional in material processing like yourself. At Rosskopf + Partner, exactly these structures are the backbone of perfect results.

Our customer consultants, engineers and craftsmen work hand in hand, both with each other and, of course, in conjunction with your team, your architects, your planners and your craftsmen.

Whether you want to use our complete process chain or just a specific part of it is up to you; we can adapt perfectly to your scope of work.



*Consulting and Requirements Clarification*



From the very first contact onward, our experts will provide you with consultation telephonically or personally together with you on site.



*Project Management, Construction, Cost Estimation and Engineering*



Perfection from the feasibility study through the tricky CAD design to resolving complex engineering problems. And everything highly efficient at the best prices.



*Single Item or Serial Processing*



Our manufacturing teams are able to satisfy all orders from single quantities to thousands of items.



*Transporting and Assembly*



Meticulous handling processes, packaging systems and our internationally experienced installation teams guarantee our quality.



## Asking the proper questions is half the battle

The most important thing in a common journey is that everyone has the same goal. Therefore, joint ventures with us always begin with an intense conversation.

We want and need to understand your requirements in order to prepare everything perfectly and be able to complete the project with you. For the implementation, this will save you time, money and nerves. Guaranteed! This is true especially when – as is often the case – there are a variety of partners with differing interests.

First, we determine precisely which services performed by Roskopf + Partner are required to complete your order flawlessly. Using feasibility studies, our material and processing experts will examine the possibilities of realizing your intended design. Here, the question is always “how” and not “whether” we can implement the project, because we are able to find solutions for projects where others have given up as early as the planning phase.



### From Planning to Implementation

In an example of a detailed model of important aspects and details to be clarified, the design is examined in an attempt to optimize the project in the best interests of the architect within the framework of the budget.



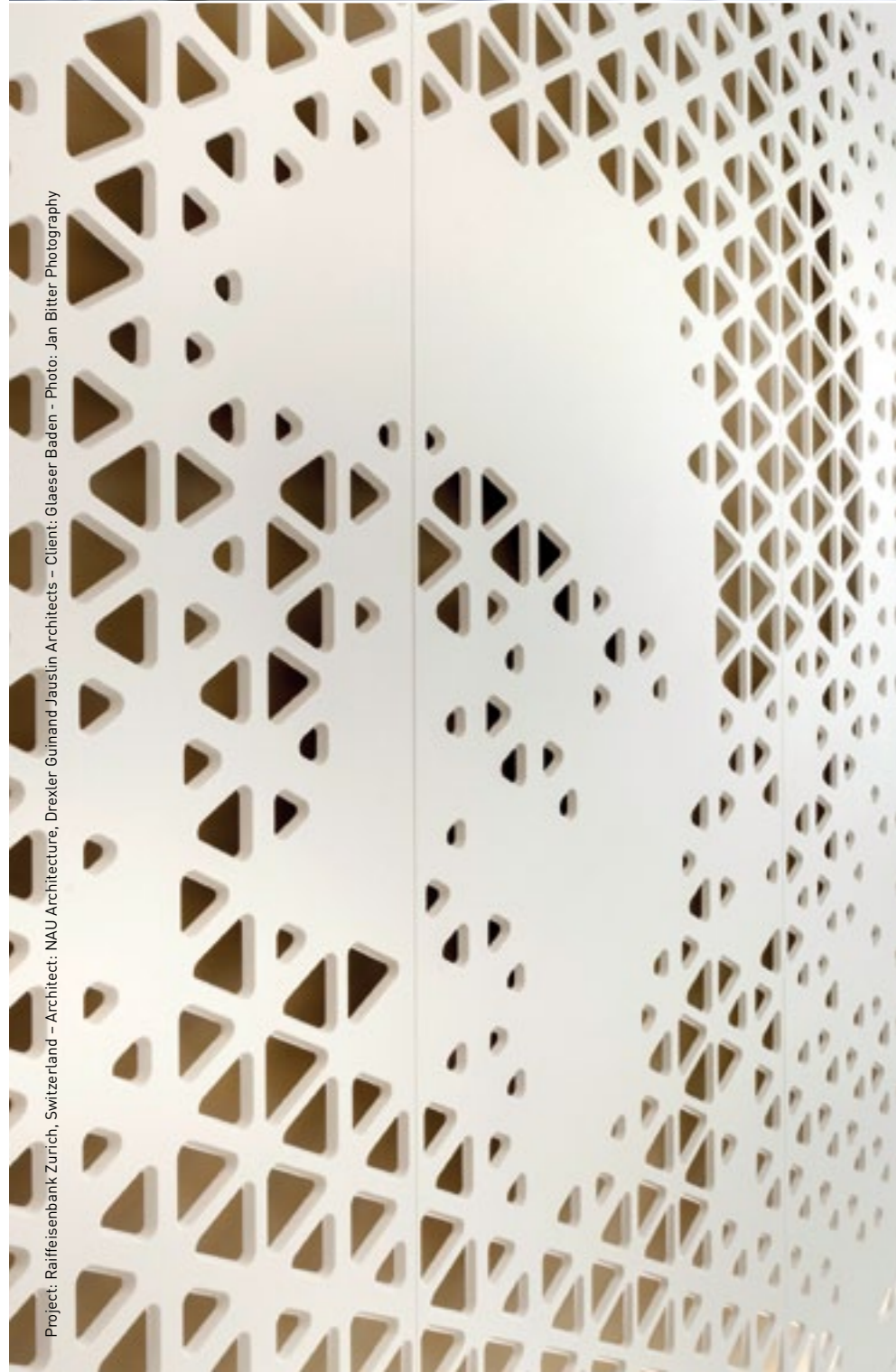
## Satisfaction can be planned

Anyone who is involved in large projects knows how important it is to ensure the highest level of financial security. First of all, it is important to determine the most cost-effective approach to production.

This takes place literally on the “drawing board” – or rather in its electronic successor: the CAD software. During the design phase, the advantage becomes particularly evident in collaboration with our experts, because at this stage all aspects of manufacturing and

assembly are considered and planned – and intelligent detailed solutions and decades of experience can save you a lot of time, money and nerves.

If you already have planned objects and the corresponding CAD and CNC data, we can, of course, adopt them and ensure that the project is implemented according to your requirements and the wishes of your customers.



Project: Raiffeisenbank Zurich, Switzerland – Architect: NAU Architecture, Drexler Guinand Jauslin Architects – Client: Glaeser Baden – Photo: Jan Bitter Photography



## It is no coincidence that people talk about “German Engineering”

At Rosskopf + Partner, your counterpart is always a seasoned professional, because for us, German Engineering is more than a promise of quality. It is our calling.

Through many years of experience in engineering complex projects with three-dimensional geometries, we are able to offer a proven and perfected range of services. We can gladly assume responsibility for all necessary tasks that are related to your project for you. Whether it is project management, the coordination of all assembly sections involved in the implementation, points of contact and establishments all the way through to the official final acceptance.

If you transfer the responsibility for construction management to us, our employees will go to the ends of the earth for you. We are familiar with and able to handle all international customs and logistics processes as well as the regional peculiarities in the target markets.

We are also able to become involved in your proposed process chain and support your assigned project managers professionally and efficiently in their work.



**Local Logistics Centre**

We keep a complete assortment of materials and colours ready for you. That way, it is possible for us to ensure reliable, quick and flexible delivery of our products.

## More than anything else, we prefer to deliver a smile

No project is completed in the workshop. After delivery onsite, the last step is usually "assembly" which takes place prior to the final acceptance by you or the builder.

During handling and for storage, special care must be taken of elements made of modern materials. For this, comprehensive knowledge of packaging and handling is necessary, because the extremely high stability and robustness of the components often only emerge after they have been installed.

For the last step, transporting the elements, we only engage or recommend experienced logistics partners who have the necessary expertise and offer the best value for the money.

Over the years, Rosskopf + Partner has developed highly functional, environmental and partially reusable special packaging and packing methods to ensure that your products arrive safely at their destination and, at the same time, can be transported ergonomically.

For more complex geometries, we produce special packaging to ensure error-free handling. The surfaces that were perfectly polished in the factory are also given special protection to ensure they reach their destination undamaged and in superb condition.

# Solid Surface Material

The unbelievable possibilities of this material fascinate people over and over again – homogeneous, optically gap-free surfaces, exciting illumination effects and, above all, completely unconstrained thermo-formability make it possible for the designs of creative architects to be more and more spectacular.



## The Solid Surface Material Avonite® *Material Properties*

### Composition

- 70% aluminium hydroxide, 25% high-grade acrylic and 5% pigments

### Aesthetic Features

- Gap-free joining of sheet material
- Invisible transitions to give the impression of a single massive object
- Smooth joint-free installation of washbasins made of the same material (no dirty edges, perfect hygiene)
- Customized thermo-formable with unchanged material properties
- Translucent: Material can be relief-milled first and illuminated effectively from behind.

### Technical Features

- Resistant to all common household chemicals and food
- Resistant to water, dirt and moisture
- Can be easily repaired if damaged
- UV-resistant

### Designs / Colours

- Plate thicknesses of 3, 6, 9 and 12 mm
- Widths of 762, 1370 and 1520 mm
- In custom formats every thickness between 3 and 19 mm, every width from 762 to 1524 mm as well as every length from 1829 to 5182 mm
- Available in 73 colours





+ **Perfect results are the sum of perfect details.**  
During all processing steps, a perfect flow of information is critical.



## The eye is a valuable tool

We plan and process solid surface material for you at our factories in Hennersdorf and Schlotheim. Here, craftsmanship has centuries of tradition. The resulting excellence in quality inspires our customers again and again.

While we specialize in the production of custom-made products in Hennersdorf, the team in Schlotheim primarily produces serial orders at higher volumes. Both locations are staffed appropriately with the machinery and infrastructure to focus on and perform the corresponding processing tasks and, accordingly, perform their work in an outstanding manner.

In this way we can always attain the best quality, best delivery time and, frequently, also the best prices.



## Think in the third dimension

Decades of working with solid surface material has taught us that yesterday's limitations no longer exist. Designs that were not possible just a few years ago are now constructed routinely. At Rosskopf + Partner, we were often the pioneers — the first to enter new territory and define the boundaries successfully.

When you stand before a very large stunningly remarkable three-dimensional homogeneous object that appears to have no grooves or joints, it is a very impressive experience indeed. Such a product as a single monolithic object has only been possible since solid surface material could be processed and thermoformed.

Whether from sheets of material to design elements or from sheets to serial washbasins: both in thermoforming and material technology we have decisively continued to go forward in our development of new products. With our range of lavanto® moulded parts – from sinks to baby bathtubs – we are a global leader, and our achievements in free thermoforming and the assembly of three-dimensional objects are second to none.



**+** **Virtually every design wish can be fulfilled**  
With solid surface material, essentially all geometrical shapes and colours can be used in designs and implemented — even in single quantities at attractive prices.

## Masterful Employment of Light

Through the masterful craftsmanship of what at first appears to be an inconspicuous sheet of solid surface material, a fascinating design object can emerge. Bright colour schemes that have dominated the world for years can now be effectively used in illumination.

It is not just a few observers of the architectural scene, who are convinced that these impressive lighting effects result in a unique excitement about our material for architects and developers. Processing it requires the highest standards of precision and expertise, so that only the light which is supposed to “shine through” becomes visible.

Significant in this area are the perfectly conceived designs and the electrical installations which are frequently necessary. Above all, our team of experienced craftsmen and technicians are the decisive factors.



**+** **Relief Milling of Solid Surface Material**  
Because of its translucent property, with this technique, it is possible to create stunning lighting effects as well as a smooth surface that is easy to care for.

## Series heroes among themselves

The production of products in series not only demands more intensive planning and work preparation, but it also requires the proper machinery and equipment to profit from the advantages of serial production in the form of low costs.

Be it washstands or entire sanitary facilities for hotels, counters at airports and coffee house chains or functional workplaces at universities and laboratories, in many places, the benefits of solid surface material pay off and the same objects are always used in large quantities.

Synergies and cost advantages can be realized if the production is planned accordingly. In our work in Schlotheim, from the planning process through the automated infrastructure to "just-in-time delivery", we are specialized accordingly to support serial production. Our experienced team, which has a proven record in its capabilities in repetitive flow production, works together here under perfect conditions to produce small, medium and large serial products for you.



+

In the order that you see here, we are producing 2000 units for our clients. Our inventory control team plans the perfect volumes for use of the saws at the required quantities and intervals.



+

The entire facade and a large part of the interior design in the customized LEONARDO glass cube were planned and carried out by Roskopf + Partner using solid surface material. The quality of design, engineering, fabrication and installation achieves a level that is unequalled anywhere.



Project: LEONARDO glass cube, Germany - Architect: 3deluxe - Photos: Emanuel Raab



+

To achieve the effect of lightness and transparency, complex, static calculations, super-precise bonding, thermoforming and a flawless finish are required.





Project: Raiffeisenbank Zurich, Switzerland - Architect: NAU Architecture, Drexler Guinand Jauslin Architects - Client: Glaeser Baden - Photo: Jan Bitter Photography



+ The design and fabrication of an entire bank using solid surface material: The faces of former prominent residents of the bank in Switzerland have been milled into the material. Counters, tables, partitions and furniture were thermally shaped and merged into smooth, gap-free visual objects.

Project: Westfield Shopping Mall, UK - Architect: Pearson Lloyd - Photo: Mark Wilson Photography



+ The information displays in the English shopping mall are integrated flush with the surface in sculptured objects with multiple curves.



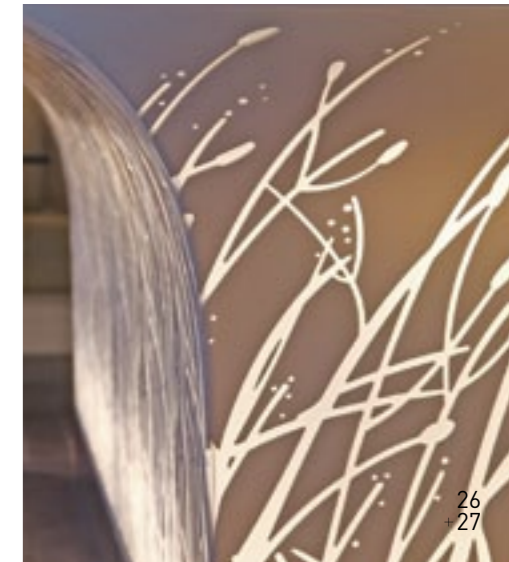
Project: ETH Zurich, Switzerland - Architects: Holzer Kobler Architects - Photo: Jan Bitter Photography

+ In this historic hall of the ETH in Zurich, a modern construction element was included, whose elegance comes from airy, curved solid surface material.

+ The floral inlay is striking because of the translucence of the solid surface material and illuminated, emphasizes the ornamentation of the relief milling.

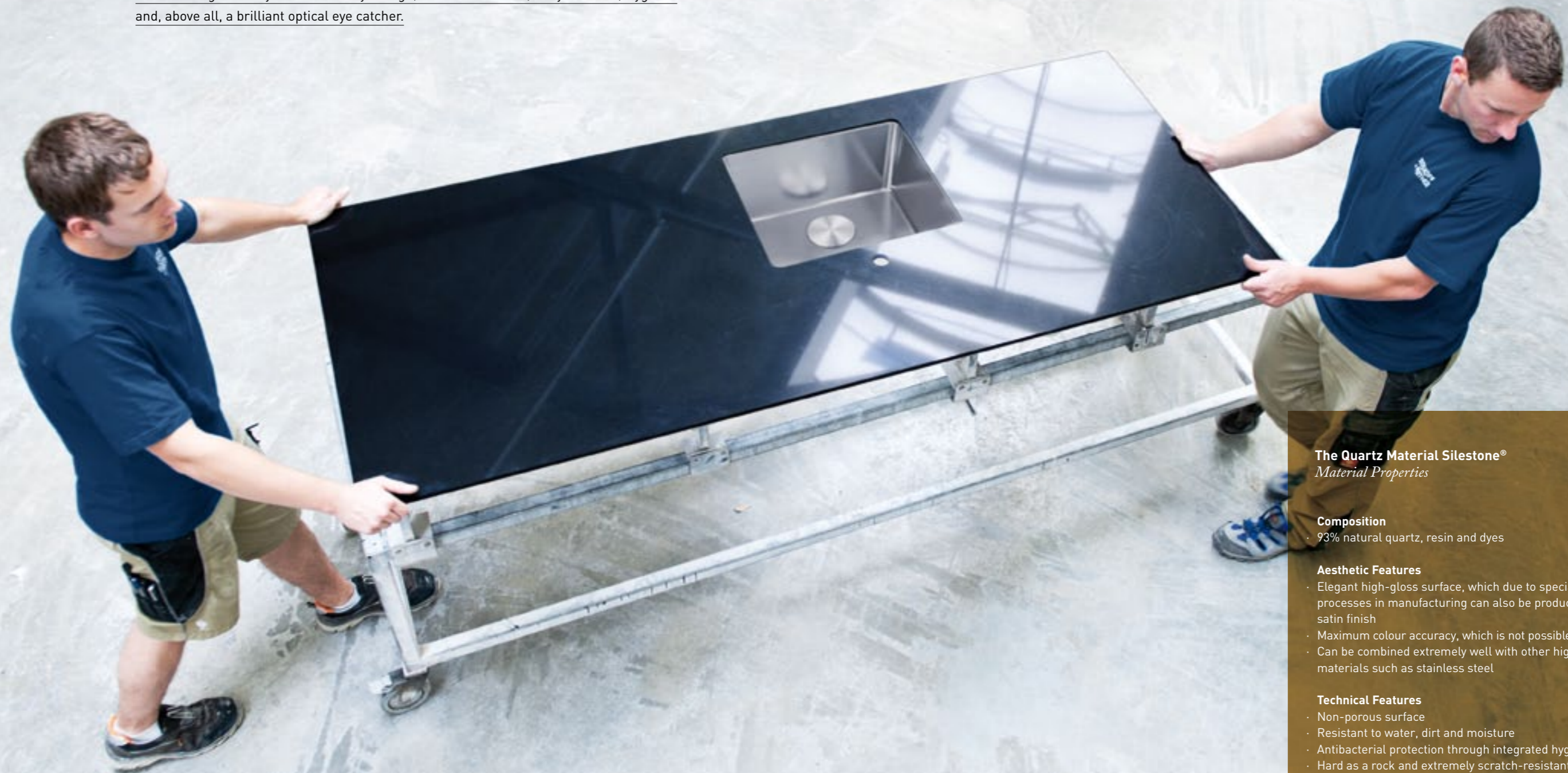


Project Restaurant Yang Sing Oriental, UK - Architect: Roberta Fulford - Photos: Mad Godfellow



# Quartz Material

Where the possibilities of natural stone reach the end of their limitations, quartz material is used more and more frequently. The spectacular colour assortment ranges from natural tones to bright trendy colours. Always tough, scratch-resistant, easy to clean, hygienic and, above all, a brilliant optical eye catcher.



## The Quartz Material Silestone® *Material Properties*

### Composition

- 93% natural quartz, resin and dyes

### Aesthetic Features

- Elegant high-gloss surface, which due to special grinding processes in manufacturing can also be produced with a satin finish
- Maximum colour accuracy, which is not possible with natural stone
- Can be combined extremely well with other high-quality materials such as stainless steel

### Technical Features

- Non-porous surface
- Resistant to water, dirt and moisture
- Antibacterial protection through integrated hygiene protection
- Hard as a rock and extremely scratch-resistant
- Heat-resistant to a high degree (up to 140 ° C)
- Ecologically sound: ISO 14001, NSF, LGA hygiene checks, GREENGUARD

### Designs/Colours

- Panel thicknesses of 12, 20 and 30 mm
- Available in 50 colours



## Bright Prospects

The processing of quartz material is not dissimilar from natural stone. At Rosskopf + Partner, we process quartz material with the precision of an industrial enterprise and the construction expertise of our specialized engineers.

This has many advantages: from cost-effective milling to sophisticated, well thought out matured processes from an ecological point of view.

In the end, however, what is most convincing is the high quality of the product. Even at first glance, one recognizes the perfect uniform finish with nearly invisible joints and no gaps or the professionally built washbasins. This is the result of intensive quality control before each object leaves our production facilities and is then assembled to perfection on-site. If desired, also in your project.

### + Super Elegant High-Gloss

Quartz material is machined using water-cooled moulds and then polished. This results in flawless surfaces that are unparalleled in quality.





## Quality that Brightens the Eyes

Anyone who opts for quartz material gets a modern product with exceptional properties. Anyone who selects Rosskopf + Partner gets along with it exceptionally unique processing quality.

Quartz material contains a high content of natural quartz, which provides significant functional benefits that make it ideal for use in many applications.

Quartz material is extremely robust and easy to clean, cut-resistant and extremely elegant, whether the material is used as a work surface, in floor tiles, in wall tiles, in the bathroom, in the kitchen, in the hotel or in the office. Perfectly processed, you will enjoy your furniture object made of quartz material for a very long time.

After many years of experience in numerous areas of implementation, our consultants can best assess how to best realize your plans to use quartz material.



### + Precise Control View

The excellent quality of our quartz material-processing is the result of consistent quality control.



+

As a highly functional, durable surface, quartz material provides distinctive elegance to numerous kitchens.

Photo: Cosentino



+

As floor and wall tiles or as a washstand, and also ideal for a wellness bathroom: the perfect assembly of this unit by our specialists pays dividends particularly in areas where the use of water is prevalent.

Photo: Cosentino



+

As precisely laid flooring, quartz material evoked enthusiasm in visitors and the designers of Hyundai alike at this exhibition stand at the IAA.

Photo: Roskopf + Partner

# Porcelain Ceramic

This material is a masterpiece of modern engineering. Porcelain ceramic is our hardest material and therefore ideal for use in places where there is a lot of activity every day. Architects love its robustness, but especially its beautiful velvety smooth surface and the pleasant sensation when touching the material itself.

## Porcelain Ceramic selatec® *Material Properties*

### Composition

- 100% natural product: feldspar, different types of clay, kaolin, quartz and other minerals.

### Aesthetic Features

- High density and homogeneous surface
- Extremely pleasant feel to the touch
- Can be combined well with other high-quality materials such as stainless steel

### Technical Features

- Lighter than aluminium
- Material with Mohs 8 hardness, highly scratch-resistant (Diamond Mohs 10)
- Resistant against all common household chemicals and food
- Resistant to water, dirt and moisture
- UV-resistant
- Abrasion-resistant
- Heat-resistant to a high degree (up to 300 ° C)
- Ecologically sound: ISO 14021, made of 30 - 45% recycled material (depending on the colour)

### Designs / Colours

- Thickness of slabs 6 and 12 mm
- Available in 43 colours

## Completely New Possibilities Thanks to a Perfect Finish

Many designs with a satin finish simply look more coherent than with a high-gloss finish. Because of the extreme hardness and scratch resistance of porcelain ceramic, even after many years it still looks as new as on the first day.

To the current day, this innovative material still has its most valuable functional advantages in the kitchen as a cut-resistant, extremely elegant worktop. But the possibilities go far beyond that. For any area where a robust, virtually indestructible surface is required, porcelain ceramic scores well with its Mohs hardness of 8 – only one category below a diamond.

The perfect matte appearance comes across brilliantly in modern hotel and restaurant architecture, shops and exhibition booths. It also provides an elegant setting in places like lounges, health facilities and clinics. And no matter where you plan to use the material, you can rely on the hardness of the surface and on its flawless machining by our experts.

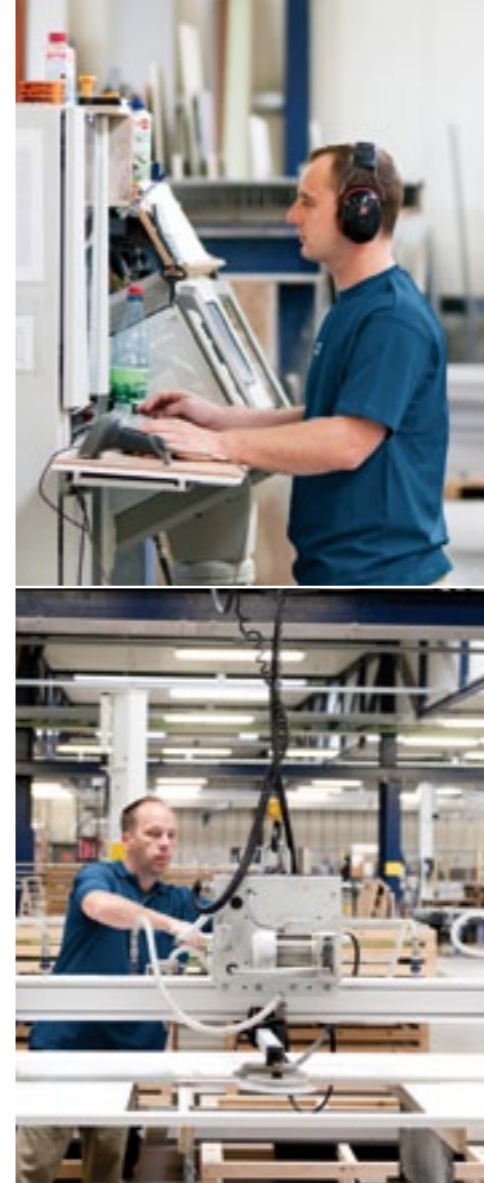
osskopf-partner.com



### The Secret

Years of expertise and a lot of care in processing having evolved into the creation of a perfect satin surface – and it is virtually indestructible.





## As a Material — a Truly Hard Matter

As in many cases, even with porcelain ceramic, the key lies in the correct processing technology. Combining our machinery with modern water jet technology, years of expertise in materials technology and a lot of care makes it possible for us to achieve the very best results with this innovative material.

Also in the processing of this new material, our experts have already become so deeply involved in this work that we can offer exclusive machining techniques and solutions which, in terms of cost, installation options and in particular with regard to the surface quality, no one can replicate.

If you would like to expand your portfolio with highly functional, durable, semi-gloss surfaces, let us recommend that we get together for a discussion.



### **Water Jet Technology**

Using the most modern processing machinery, porcelain ceramic is cut, milled and finished.



+ Porcelain ceramic expands the spectrum of tantalising finishes and materials. Here, for example, in the shade Corten Red as a scratch-resistant work surface and furniture front.

Photo: TheSize



Photo: TheSize



Photo: TheSize



+ The precise, elegant installation of washbasins – here in the picture, for example, stainless steel – in work surfaces made of porcelain ceramic is one of the specialties of Rosskopf + Partner.

Photo: TheSize

## What drives us

Our roots go back to the early 80s when Helmut Rosskopf became independent with his own carpentry shop. Fascinated by the properties and possibilities of modern solid surface materials, he specialized soon thereafter in the fabrication and installation of this material and, thus, still counts as one of the pioneers in Europe in its implementation.

This is how Rosskopf + Partner became the preferred address for architects and planners, who feel best understood, advised and supported by us.

Through to the current day, the combination of traditional craftsmanship and precision German engineering, together with our strong customer orientation and high service availability, characterizes the brand Rosskopf + Partner. It makes us unique and establishes our reputation, which causes us to be recognized worldwide as a renowned reliable supplier, creative idea giver and implementation partner with sound solutions.

Our business is far more than craftsmanship and engineering. Our internal approach is shaped by the continually evident caring responsibility for more than 200 highly motivated employees. Among them are many carpenters and furniture builders, who, together with their exceptional technical skills, make up the backbone of our customized production.



+ *“Your ideas and visions are our challenges, innovative materials are our element and perfection is our goal.”*

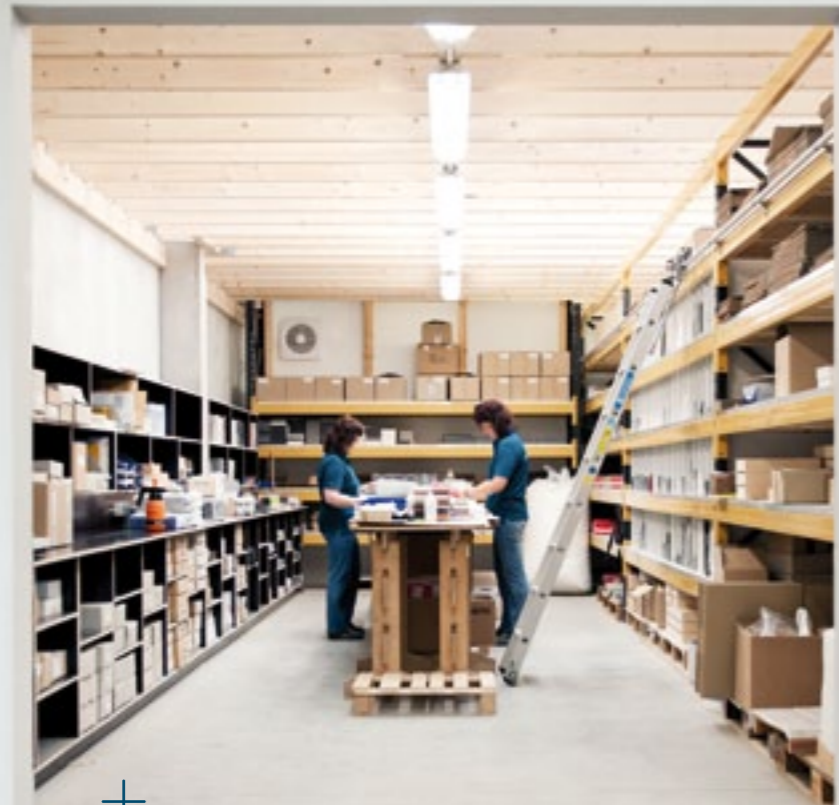
## For every question, the correct answer

As an international specialist that handles innovative materials in single item and serial production, both industrially and with craftsmanship of the highest quality, we are the right partner for each and every project.

Our comprehensive and optionally structured portfolio of services is unique in the industry, as is our claim to take on any challenge with engineering expertise and pioneering spirit and with the passion to master it perfectly. Therefore, we can give you a sophisticated quality promise: precision, creativity, reliability and the highest level of innovative capacity and willingness to serve you.

Made by Roskopf + Partner.

**Which of your ideas may we put into shape soon?**



### **Exemplary Sample Service**

The quality and the colour of a material can best be assessed by reference to a pattern. Our sample service can be reached at telephone +49 (0)36021 9899-0.



### **On Our Way to You**

We will gladly arrange a meeting for you with our experts in the field or in any of our departments. Telephone +49 (0)36021 9899-0.





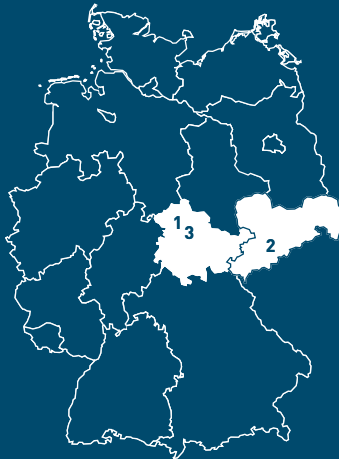


Contact us – we would be pleased  
to be of assistance to you:

**Obermehler (1)**  
**Competence Center**  
**Quartz Material and Headquarters**  
Am Flugplatz 3  
99996 Obermehler  
Germany

**Hennersdorf (2)**  
**Competence Center**  
**Solid Surface Material**  
Bahnhofstraße 16  
09573 Augustusburg-Hennersdorf  
Germany

**Schlotheim (3)**  
**Center of Logistics**  
Alltronikerstraße  
99994 Schlotheim  
Germany



---

**ROSSKOPF + PARTNER AG**

**Telephone** +49 (0) 36021 9899-0 · **Fax** +49 (0) 36021 9899-10 · **Email** [info@grosskopf-partner.com](mailto:info@grosskopf-partner.com)

---